



Social Audit Network
SAN INDIA

PROVE & IMPROVE SOCIAL IMPACT



SOCIAL IMPACT PRACTITIONER'S COURSE





About Social Audit Network, India

Social Audit Network, India, established in 2011 is an autonomous body set up under the umbrella of CSIM and shares its brand and affiliation to its parent organization, Social Audit Network, UK. SAN, UK is the technical and a knowledge partner for SAN, India. SAN India has facilitated over 100+ organizations in India to draft their social accounts and have audited them.

To know more about SAN India, please visit www.san-india.org

Social Impact Practitioner Training

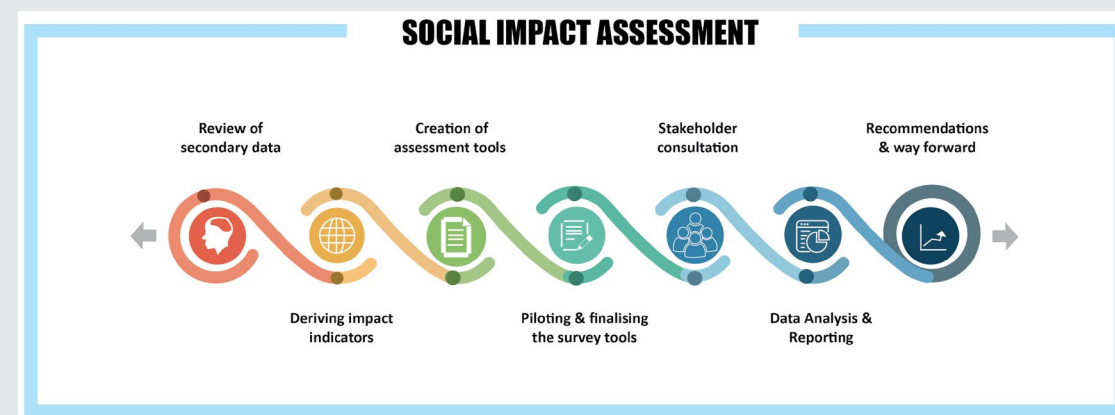
A Pioneering webinar series by SAN, India to groom Social Impact Practitioners in a focused and systematic manner to:

- Elucidate the functions, values and expectations of a Social Impact Assessment
- Foster professionalism among Impact practitioners
- Align practitioners with international trends towards sustainability assessment and development

What is Social Impact Assessment?

Social impact is the broader, long-term change that a project or programme may have on individuals and on society more generally – and that would not have happened anyway.

Impact Assessment is a structured process of analyzing, monitoring, evaluating and managing the intended and unintended social consequences, both positive and negative, of any social change process or intervention.



What you'll learn from this course?

- Why should social impact be assessed / measured
- The different dimensions of social impact
- Understanding outcomes vs social impact
- How and what of Stakeholder consultations
- How to measure well-being / social change
- 'Theory of Change' principles
- Social impact measurement tools
- Social Return on Investment (SROI)
- Resources needed to measure social impact



The growing need for Social Impact Practitioners

Establishing Social Stock Exchange in India will lead to Impact Measurement becoming mandatory for NPOs and Social Enterprises.

“...NPOs need only self-report and FPEs, in addition, will also have to pass through the assessment mechanism to be developed by SEBI; through the intermediate term onwards, social auditors can be required to do independent verification of such reporting.” – Excerpted from report of the working group on Social Stock Exchange

Impact Assessment report to be part of the Annual report for Corporate involved in CSR activities

“...A company having the obligation of spending average CSR amount of Rs 5 Crore or more in the three immediately preceding financial years in pursuance of sub section 5 of Section 135 of the Act, shall undertake impact assessment for their CSR projects or programmes, and shall disclose details of the same in its Annual Report on CSR.” – Excerpted from Draft CSR Policy Amendment Rules 2020.

SDG Reporting by Companies

Since the adoption of the Sustainable Development Goals (SDGs) in 2015, more and more companies are disclosing how they are impacting them and contributing to their achievement. By doing so, businesses need to incorporate SDG reporting into their existing processes, ultimately empowering them to act and make achieving the SDGs a reality..

Role of a Social Impact Practitioner

- To measure, report, compare and improve impact performance of social projects
- To be more pro-active, to protect vulnerable people, to mitigate negative impacts, to contribute to sustainable development and thereby improve the well-being of communities.

Who can become Social Impact Practitioners?

- Project manager of Social Projects – CSR / NGO
- Social researchers
- Social strategy developer / Consultants
- Academicians
- Development Professionals



Course Module

1. Need for Impact Assessment/Impact Practitioners
2. Theory of Change
3. VMVOA (Vision, Mission, Values, Objectives & Activities)
4. Impact Map
5. Impact indicators
6. Stakeholder mapping
7. Stakeholder consultation
8. Evolving consultation tools
9. SDG alignment
10. Reporting formats (REES; RESET; SAA; SROI)

Course Duration:

- 12 hours of on-line sessions
- 6 hours of additional assignments/worksheets
- Three months one-to-one on-line mentoring by SAN India Auditors

Certification & cost

Social Impact Practitioner - INR 10,000 inclusive of GST

- Certificate of participation by SAN India on attending the course
- Social Impact Practitioner Certificate on completion of a Social Impact report
- Membership at Social Impact Practitioner Community formed by SAN India



Resource Persons

[Dr. Agyeya Trippathi](#)

[Dr. Archana Pillai](#)

[Latha Suresh](#)

[Marie Banu](#)

[Vatsala. R](#)

Webinar Deliverables

- Access to tools, frameworks, Guidelines & resources that can be used in Social Impact Assessment / measurement
- Free Membership in the Social Impact Practitioner Community of SAN, India
- Certification by SAN, India

For more details and offers, contact:

Mr. Vimal. R at
+91-9841416840 or write to
training@san-india.org

Social Audit Network, India
391/1, Venkatachalapathi Nagar,
Alapakkam, Chennai - 600116
Phone: 044-42805365 or
+91-9884600029
www.san-india.org